

SMART Notebook™ Math Tools

More tools for math

SMART Notebook Math Tools is an add-on to SMART Notebook, so teachers have access to a comprehensive set of math-specific tools, in addition to all the great features and Gallery objects in SMART Notebook software.

Create, explore, evaluate and solve with SMART Notebook Math Tools. As an add-on to award-winning SMART Notebook collaborative learning software, it combines all the tools that teachers need to teach math in a single application.

One application for everything

With SMART Notebook Math Tools, teachers no longer have to switch between multiple software applications to access the tools they need to make math engaging and understandable. It centralizes teachers' essential math tools in one location. The software's customizable toolbar is built into SMART Notebook software, so it's quick and easy for teachers to access and incorporate dynamic tools into their math lessons.

Lessons that measure up

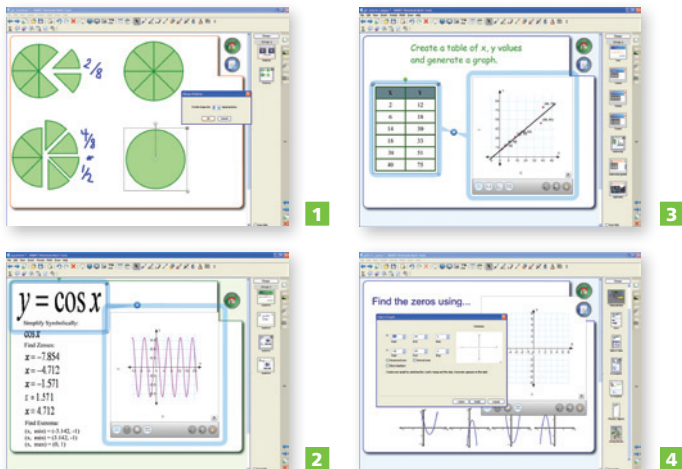
With this software, teachers have an easy way to demonstrate math concepts visually, and make their lessons more interactive and easier to comprehend. SMART Notebook Math Tools provides teachers with all the tools they need to progress through an entire math concept – from lesson preparation to graphing and solving complex equations.

The large selection of dynamic and intuitive tools includes an advanced equation editor, Texas Instruments™ emulator launcher, custom graph builder, shape divider, and table and graphing tools. Teachers can easily demonstrate changes and relationships in math concepts using these flexible tools.

The software also offers handwriting recognition for mathematical equations. It means that teachers and students can simplify, solve and graph handwritten equations, making SMART Notebook Math Tools ideal for use on a SMART Board™ interactive whiteboard.

Support for all learning styles

This software enables teachers to represent concepts symbolically, numerically and visually. Its comprehensive set of math tools improves engagement and retention for all students – no matter their learning style. SMART Notebook Math Tools is designed for middle and secondary math classrooms, but many of its tools are ideal for primary math lessons as well.



- 1 Show fractions visually, and divide and label each part with the shape division feature
- 2 Graph simple and complex equations with the software's interactive graphing capabilities
- 3 Demonstrate relationships with the linkable table and graphing tools
- 4 Easily create graphs with the Graph and Number Line Wizard or use the default graphs

Key features

Add-on to SMART Notebook software

Access all the great features, tools and Gallery items in SMART Notebook software, as well as additional math-specific tools.

Advanced equation editor

Keep equations in the correct format. The advanced equation editor enables teachers to copy and paste equations or question sets from other software applications, such as Microsoft® Word, without reformatting. The software recognizes the equations, allowing teachers and students to simplify, solve and graph solutions.

TI emulator integration

If you are using a TI emulator (not included with SMART Notebook Math Tools), you can launch it with one click. The TI calculator will stay on top of the screen as teachers copy expressions into their lessons.

Shape division

Show fractions visually using shape division. Divide shapes such as circles and rectangles into equal parts, and each part can be labeled as a fraction of the whole.

Shape manipulation

Adjust vertices of any shape and watch the angle and line lengths change instantly. Adjust one angle and the corresponding side lengths change automatically. The display of side lengths can be turned on or off.

Handwriting recognition and solving

Handwrite and solve questions on the fly. SMART Notebook Math Tools recognizes handwritten mathematical equations and symbols. After equations are recognized, teachers can simplify, solve and graph solutions.

Table and graphing tools

Easily show the relationship between tables of values and their points plotted on a graph. Changed values on a graph are automatically reflected in the table and vice versa.

Graph and Number Line Wizard

Create graphs and number lines or use one of the default graphs or number lines for fast instruction during a lesson.

Integrated math engine

Evaluate simple and complex math expressions right inside SMART Notebook software without requiring a separate calculator.

Customizable math toolbar

Customize the default SMART Notebook toolbar to show only the tools teachers want to see or display a second toolbar with just math tools.

System requirements

Windows® operating system

Pentium III 750 MHz processor • 512 MB of RAM
 • 800 MB of free hard disk space for minimum installation (2 GB for full installation with Gallery collections) • Windows 7, Windows Vista® or Windows XP operating system • Internet Explorer Internet browser 6.0 or later • Adobe Flash player 10

Requirements for SMART Video Player

Pentium II 450 MHz processor (700 MHz or faster recommended) • Windows 2000 operating system or later • Microsoft DirectX application programming interface 8.1 or later

Authorized Reseller:

SMART Technologies

Toll Free 1.866.518.6791 (U.S./Canada)

or +1.403.228.5940

smarttech.com